

BRIGHTON TOY and MODEL MUSEUM

52 - 55 TRAFALGAR STREET
BRIGHTON, BN1 4EB
01273 749494
info@brightontoymuseum.co.uk
www.brightontoymuseum.co.uk



REGISTERED CHARITY
NO. 1001560



NEWSLETTER

2013 VOLUME 4

Museum Trust: – Chairman: A. Pett. Director: C. Littledale. Trustees: M. Gilkes, A. Capo-Bianco, C. Kendall, H. Marsh, K. Mathews, M. Simek.
Collections trust: - Chairman: A. Capo-Bianco. Trustees: M. Foster, E. A. Manthos, V. Michel, B. Potter, M. Simek, C. Littledale, Secretary: C. Littledale
Life Patrons: A. Capo-Bianco, C. Littledale, R. Boorman, J. Morgan, P. Hammond, R. George, J.M. Dunlop, M. Foster, G. Andrews, A. Campbell, D. O Brian

FRANK HORNBY 150TH ANNIVERSARY CELEBRATION at the Museum



2013 marked the 150th anniversary of Frank Hornby's birth and a Heritage Lottery Grant was secured thanks to Eric Baird, in order to celebrate the occasion and to raise the awareness of the Man's achievements from Meccano onwards (see p. 9).

DATES FOR YOUR CALENDAR

Lighting

INSIDE THIS ISSUE

Manager's Report.....	2
A few Words from the	2
Changing Faces.....	4
Museum Achievements.....	5
Museum Improvements.....	10
Museum Acquisitions.....	11
How You Can Help.....	13
Forms.....	14



Special Train Running Day

Saturday 9th November: 10.30am-5pm

This year the theme will be: "Across England and Along the Rhine" Enjoy the pleasures of pre-war rail travel as portrayed by the perfect models of the time.

Usual admission charge: Adult £4.50, Child(4+)/OAP/Student/Concession £3.50, Family of four £12.50

Lost in the Toy Museum Children's Play Day

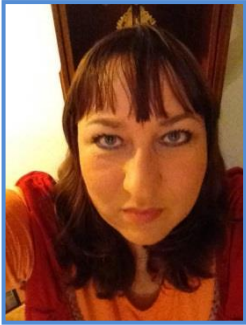
Sunday 24th November: 12am-4pm

Meet with the children's author and illustrator David Lucas who will run drawing workshops throughout the day and listen to Lost in the Toy Museum readings, play with wooden train sets and child-friendly Meccano and more.

Admission charge: £4 for a child; £1 for one accompanying adult, extra adults admitted for the usual entrance charge. Children under 3 go in for free.

MANAGER'S REPORT

ACTING MUSEUM MANAGER, TIGGER SAVAGE



Firstly, may I add my congratulations to Stacey on the birth of Mason last February. I came into post part time in October, ready to provide full time maternity cover as manager. Most of you reading this will know me as I was already one of the Education Officers and have been volunteering in one capacity or another since the museum's inception over twenty years ago. Secondly, we extend our congratulations to Signe and Vikas who are expecting their first child in January.

The museum has enjoyed increased press coverage of late, featuring in editorials in our local paper, many television channels and specialist publications such as the HRCA magazine. Our lottery award-winning project Hornby 150 has also afforded us improved publicity and status in the field.

Visitor numbers are up on last year but school visits are less buyout. We believe this is due to stricter health and safety requirements and transport issues – not least Brighton and Hove buses' recent refusal to carry groups of school children, even with advance notice from school staff.

As I write we are enjoying a heat wave, and the summer has also brought us a number of interns from European universities. These have proved invaluable in translating our Wiki pages, covering during volunteer shortages and generally adding to the fun yet industrious atmosphere at the museum.

I am very happy to be full time here now, even coming in every other Saturday as that way I get to meet all our volunteers. They are a lovely bunch of people but there are never enough of them. So, I am still recruiting. Anyone for fresh coffee and cake

A FEW WORDS FROM THE...

COLLECTIONS INVENTORY CO-ORDINATOR, NICK GIBSON

Mid-way through 2012, Chris Littledale came to me with a basic outline for an inventory process which would capture vital details about the exhibits in the Museum's collection. He asked me to take it on from there.

Sounds like an interesting project, I thought. Should be fairly straight forward, I thought. Well, 12 Months down the line I can confirm that it has been interesting... but far from straight forward.

Trying to incorporate the vast, but disparate, wealth of knowledge already recorded, into a new project while making sure nothing is missed and no duplicate work is carried out was certainly a challenge. Keeping the Museum's MLA accreditation in mind was also a must. With our re-evaluation taking place last March it was essential that any inventory process going forward would meet their stringent requirements and at the same time be simple enough so that any volunteer who wanted to get involved could do so with minimal difficulty.



Well, here we are in October and I can happily say that the project is fully underway and that the hours of work to get to this point seem to be paying off. We have a small team working on the project and any last creases in the system are being ironed out.

To see how this project benefits the Museum and its visitors you only need to have a look in the Soft toy or Dinky cabinets. These are the most recent cabinets to be completed and you will see a huge increase in information labels from before. You will also notice the small reference numbers on these labels which tie the exhibit to its unique entry in our database spread-sheet.

Eventually every exhibit and non-exhibited item will have a reference number and database entry and when we reach that point we will have the best idea of the Museums' contents and importance since it first opened over 21 years ago.

It has been a challenge getting to this point and I'm sure there will be more issues to overcome. I am very happy to have been able to get this new phase of the inventory off the ground and look forward to making leaps toward a rewarding goal.

EDUCATION OFFICER, ANDREA DUMBRELL

Since October 2012 I have been solely responsible for the education department at the museum, due to Tigger taking on her new role as Museum Manager.

The museum is very popular for school visits. While many of these visits have been from schools who have been before, we've also had a number of new schools visiting us. The majority of these visits have been from Key Stage 1 (Years ?) classes who are studying a topic on toys. The sessions have therefore focussed on the topic of old and new toys, looking mainly at teddy bears and dolls, and discussing the difference between old and new examples, including what they are made from. We have also been pleased to have had a number of bookings from Key Stage 2 (Years ?) classes who have been studying the topic of Victorians, and have linked these sessions to travel, the seaside, and Victorian Brighton. We've also run a number of sessions on moving toys and mechanics for both Key Stages, as well as sessions for nursery aged children.

As part of the Hornby project, the Education department has offered a range of sessions linked to the legacy and achievements of Frank Hornby. We've also produced information and activity worksheets for use by children visiting the museum, and these have been well received by visitors.



We've also been lucky to have received a number of donations of toys for use in education sessions, including a 1930s dolls' pram, stuffed animals, dolls, and puppets. These have allowed us to increase the range of examples we can use to help children learn about the history of toys.

This year has also seen the further development of "Heritage Learning Brighton and Hove". This is a partnership of heritage organisations across Brighton and Hove who are working together to offer schools a comprehensive choice of experiences for their pupils. Partners include the Brighton Toy and Model Museum, the Police Cells Museum, Volk's Railway, the Fishing Museum, the West Pier Trust, and the Royal Pavilion and Museums. We have been involved with this partnership since its early stages a few years ago. As well as providing opportunities for networking and mutual support between the partner organisations, "Heritage Learning Brighton and Hove" has also produced a booklet advertising the education sessions offered by the different heritage organisations. These have been distributed to schools and other educational establishments across Sussex. A website is also currently under construction and will be available in the near future.

CHANGING FACES

AS ALWAYS, A MASSIVE THANK YOU TO ALL OF OUR TRUSTEES, STAFF AND VOLUNTEERS

We would like to bid farewell and good luck to those moving onto pastures new...

These volunteers have left the museum: Aisling left in pursuit of a career in teaching children. During her time at the museum, she was a great help with museum events, designing events posters and brochures; Anne, who led the organisation of the Time Travel Express event last year left to go back home to New York where she has successfully finished her degree in History this year; Davide, an invaluable museum volunteer, left for a job as an Assistant Manager at a local charity shop; Rachel, who helped out with educational visits, left after completing her degree at the University of Sussex; Adrian, who helped out with the inventory project, moved to attend a course in Museum Studies last Autumn; Lucia, who designed the museum's educational brochure, moved to London in pursuit of a career in the city's museums. Other volunteers who left the museum include: Rachel, Jessica, Gillian, Claire, Rose, Zoe, Giulia G., Sakura, Agathe, Zlatina, James, Kerry, Ricardo, Giulia Z., Gary, Matt, Lin, Toubing and Villa, Francisco, Laure, three French interns who made a significant contribution during their short stay at the museum: Anthony, Juliete and Pierre.

...and welcome to the newest additions to our team...

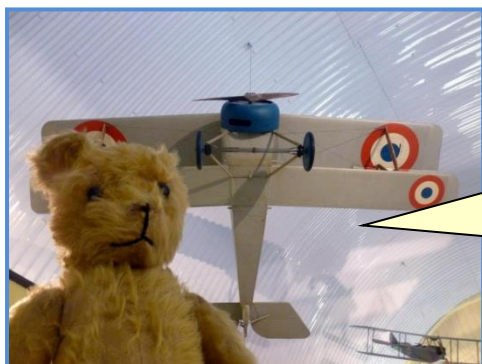
Another welcome addition to our Manager, Stacey and Jon Trumble's family is baby Mason. After the birth of their son Lucas in 2011, Stacey has added yet another member to her growing family, little Mason. We look forward to further visits from the little "Double-Trumbles".



Tigger Savage has joined the museum's management team and is doing a fantastic job covering for Stacey. Signe, who covered Stacey's role during her 1st maternity leave, has stayed on in her new role as Assistant Manager/Events Manager.

Another new role created this year at the museum is the Frank Hornby project officer, Eric Baird. Eric has been appointed to run an exciting project, funded by the Lottery Heritage Fund, to celebrate and commemorate Frank Hornby 150th anniversary, lasting till late 2013. Volunteer Nick Gibson took over the museum collection inventory coordination last June and has been running it since then. He will continue with this voluntary work in addition to providing the maternity cover for Signe. Other volunteers who have joined the museum this year include: Asli, Jo, Christine, Eleanor, Lauren, Sean, Andy, Luke Sam, Steph, Melita,

Greetings from the Buddy Bear



Hello, I've recently joined the museum's team. I'm a British bear and I was gifted to the Tigger's aunt. I currently live in the educational cupboard. I'm looking forward to new friends on Facebook.
<https://www.facebook.com/buddy.b>

Obituaries

Tom Rose, past away aged 80. In his younger days he flew airplanes, drove exotic fast cars, and drove full size traction engines. In the 1970's he joined the Engineerium in Hove. Later on he moved to Christies South Kensington, during which time I joined to catalogue the famous Coluzzi Model Train collection in Lausanne-Switzerland. Very hard work, but a fabulous experience. He was a lovely man to know.

Peter Lonsdale. Peter joined the museum around 1991, at the very beginning, mainly concentrating on '00' layout construction. Excluding certain breaks due to his wife's periods of poor health, he remained faithful to the end, working long volunteering shifts. Before his days in the museum he had an important position in Southern Hobbies Hove. Sadly, his health declined in the last five years and it became obvious that a move to the USA with his family was the best thing to do. He finally left for his new home, with of course a new railway layout in 2012. He has been sadly missed at the museum by all who knew him.

Chris Littledale

MUSEUM ACHIEVEMENTS

MUSEUM ARTS COUNCIL ENGLAND (FORMELY MLA) RE-ACCREDITATION

Since 2012, the museum has been working on the MLA re-accreditation with the help of two trustees: Cecilia Kendall and Alan Pett. We managed to receive the new certificate in August. You can see that the transformation between MLA and Arts Council England is complete via the new certificate in the foyer.

MAKING OUR JAPANESE COLLECTION KNOWN

Volunteer Jo Pickard has been successfully working on the research and promotion of our unique Japanese Dolls' collection. Thanks to her, our collection is now recognised and listed by the Japanese Embassy in London. She has also been responsible for recent renovation of the display at the museum. This has led to our inclusion in the Japanese 400 Festival nationally. Through this we hope to raise money for the further collection improvement and upgrade.



NORTH LAINE SIGNAGE

For some years now certain members of the museum have shown a keen interest in opening up the North Laine area, through directional sign posting from the railway station to the Trafalgar Street bridge underscroft. This has recently gained increased momentum. Firstly in forging an excellent relationship with the Station Manager Beth And the North Laine Traders Association. The idea is to re-route the culturally interested travelling public in the direction of small shops, cafeterias and theatres, and culminating in the famous Royal Pavillion. The route obviously would start with the Toy Museum and integrated visitor information.

EXHIBITIONS AND EVENTS

This year, the museum organised a number of events and activities, varying in theme and content. These events showed the museum in different flavours to our many visitors, refreshing the experience of our regulars and adding many new. One of the most memorable events last November was the celebration of the Coronation Scot anniversary 1st run in 1947.

Some of the events were specifically aimed at celebrating Frank Hornby's 150th Anniversary and his legacy. Among our celebrity patrons were Lord and Lady McAlpine who graced the occasion at the launch party of the Anniversary celebrations. We also hosted "Tappers", a railway enthusiasts' event in March.



Jazz Night, November 24, 2012

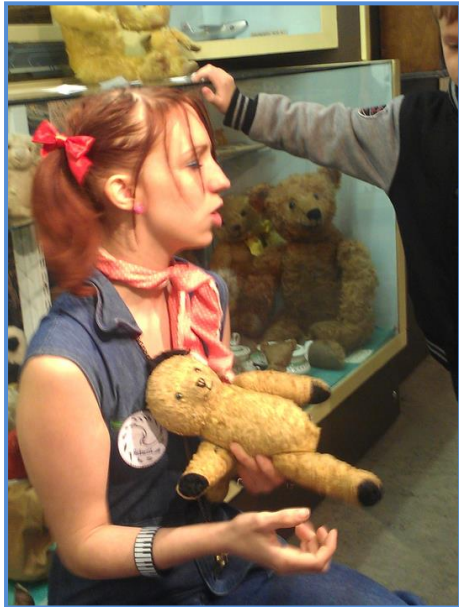
Finally, we hosted a special evening for one of our sponsors,

Rupert Toovey and his guests, in May which was also attended by the Right Worshipful the Mayor of the City of Brighton & Hove, Councillor Bill Randall.

Time Travel Express



Hornby Children's Play Day



Victorian Christmas Magic Lantern Show



Sandy Event

Andrew Woodfield's "Beresforth" '0' gauge layout was invited to be shown at the Train Collectors Societies' annual show at Sandy in July 2013. Gordon Hall kindly provided the transport and help with erecting the large, partly scenic layout, with extra help from Cyril Kennett. The layout, based on Andrew's favourite Great Central Railway, was a great success and TCS have invited him back for 2014.



Model World

The museum took part in this year's exhibition with a display of Pullman coaches of various commercial makers with emphasis on promoting the 5 BEL project which we help to "front". A recent Hornby production of the 5-car Brighton Belle "00" gauge model was operated as part of the display. This was also run on the Museum's "00" gauge layout, and has given faultless service. The three day event was supported by both 5 BEL Trust and Museum associates.



Coronation Scot: What a Sight

The "0" gauge large scale railway layout has always been home to the famous rare Basset-Lowke "Coronation" locomotive n°6220 in its dramatic dark blue with horizontal silver bands. During 2012 the opportunity arose to acquire the entire machine "Coronation Scot" train, by EXLEY for Basset Lowke, all nine coaches also in silver banded blue. A most generous supporter financed this superb set which for its age (approximately 1938) was in exceptionally good condition, the roofs being the only let down with worn and poorly repainted touch ups.



Having sorted the roof problem and some others out. On Saturday 10th November, we ran the whole train for the first time in public. We even arranged a special Coronation

Scot lunch at the Lord Nelson Inn for those happy to pay and they got a Coronation Scot style menu. The lunch break was followed by another 2-hour running session during which we ran another exotic EXLEY LMS train in 1934 period elaborately lined out Crimson rake. Several classic Basset Lowke engines also handled this one. Running days of this sort are hard-work but well rewarded by the audience and enthusiasm.

Another similar occasion will be on November 9th, 2013. This time, we will concentrate on the East Coast boat-train to the Hook of Holland leading to Germany, Switzerland and Italy. For those on aufictitious holiday, we may go along to Monaco, France and Austria. Hope you can make it.

Chris Littledale

Museum Celebrations of Frank Hornby's "150th" Date of Birth

The 11th May marked the start of our Frank Hornby 150 week. It was attended by the Chairman of the HRCA, David Embling with his wife Monica and many HRCA members and their families together with members of the public. The Mayor of Brighton and Hove, Councillor Bill Randal, also made a welcome appearance in full regalia, as did Councillor Anne Meadows, the Deputy Mayor.

The running day majored on the operation of many Hornby "Specials." They naturally included the famous "Five Guinea Princess" hauling appropriate Exley LMS Coaches, and a double headed boat train with L1s A759 and 1759 hauling a rake of Hornby "Wagon Lits" and early No2 Special Pullmans. There was also a special appearance of an 'LST 120' Tank in black with green lining together with a rake of Southern 4-wheel coaches. Such a credit to the Meccano engineers of the day that these items, nearly 80 years on, are still running as well as when they were first made. This was of course due in part to Peter Bryant's electrical skills with the Museum's Controllers. (Peter is more used to working with more like 750 volts than a meagre 20 when operating his 12" to the foot Southern Layout!)

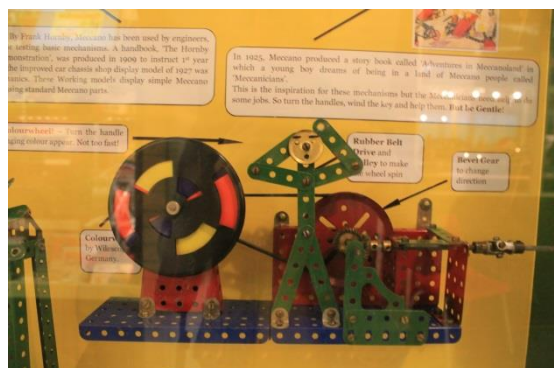


Frank Hornby was born (officially) on 15th May 1863 and 15th May 2013 would have been his 150th birthday which of course had to be properly celebrated. (Please note: 15th May is on the Birth Certificate. When dealing with "official" bodies such as the HLF or HMRC, no other date is acceptable. Any other date must therefore be regarded as "urban legend")

A special birthday party on that day was organised by trustees, volunteers and friends of the museum and attended by 50 or so supporters. This event was the pinnacle of Museum volunteer Eric Baird's

achievement, who, in June 2012 had identified this forthcoming event and structured a successful Heritage Lottery Fund grant application for a heritage project to mark the occasion. The "FRANK HORNBY 150" project launch took place at The Brighton Model World Exhibition in February 2013.

Chris Littledale the museum founder introduced the evening's programme. In his talk he took us back through Hornby's work and that of his team at Meccano Ltd. Mr Allen Levy, founder of ACE Train, was also present and most generously presented the museum with a customised ACE Schools appropriately named "Brighton" which was soon put to work on an immaculate rake of all eight No2 special Pullmans. This locomotive, whilst not of the usual Museum layout vintage, fitted into the surroundings perfectly, as does an ACE West Country, both providing relief to the operation of priceless vintage locomotives.



The evening was concluded by the ceremonial cutting the 150th birthday cake especially made for the occasion and much enjoyed by those present. As usual, such occasions would never be possible without the hard work of the museum's volunteers, most ably spearheaded by Cindy Waters, while "better half Frank operated the 00 gauge layout.

The Frank Hornby Week in Brighton was a great success, in addition to the events mentioned above there was a "Frank Hornby" night programme, hosted by Chris Littledale, curator and museum founder who lectured on the importance of Hornby's Meccano creation, special guided tours during the week and a children's play day which introduced Meccano to the young. With this in mind, four hand operated Meccano constructions housed in appropriately formed display cases were built by Gordon Hall to provide practical experience of mechanical operation to the youngsters something many of us will fondly remember doing in the Science Museum before it became a virtual digital desert.

Additional press and TV promotion was carried out by the heritage Lottery support team. The HLF Grant also paid for the installation of six Wi-Fi equipped touchscreens at key points within the Museum giving instant access to information and location in the museum of most of the Meccano products which will be extended to cover them all eventually. This also features links to the HRCA and DTCA web sites as well as the International Society of Meccanomen. Links to similar technology based museums throughout the world will also be formed. As might be expected, the volume of work still to be carried out by Eric Baird and his team is unenviable. A display of most of the products 'spawned' by the success of Meccano itself will be on display in one of the arches within the museum This includes the rare Hornby Control System and the even rarer Elektron Set which will remain on display until February 2014.



Our thanks must go to the National Heritage Lottery Fund without whose help this could never have happened, Eric Baird for securing it and to the generosity of the HRCA and our many other sponsors and volunteers without which this wonderful museum and collection would be unsustainable.

MUSEUM IMPROVEMENTS

Lighting – A new beginning

I was asked to write an article for this Newsletter about improvements to the museum since last year, so here goes, but don't expect chronological order as time is immaterial, and any attempt at continuity was washed out of the door in June last year when the heavens opened further than they had in the previous month and I realised why the museum had purchased the Noah's Ark. However, the damp is very gradually disappearing, assisted by multiple dehumidifiers and several holes in the wall containing hosepipes for drainage. Eventually the temporary cladding will be removed from the wall, the area re-painted (3rd time in 4 years) and the Peter Brough paperweights display case re-instated. Because of the constant tweaking of displays it's difficult to remember which ones are new (comparatively) and which are re-vamped, particularly whilst re-labelling them or just adding items to them. However, under the '00' railway layout is a new display – a reasonably comprehensive array of Matchbox toys to 1965'ish, based on the late Peter Lonsdale collection. The "Fifie" fishing boat that stood on the Teddy Bears cabinet now has its own dedicated cabinet with real beach, shaped to fit the curve of the arch opposite the "Play Kitchen" display, the Zoo display has greatly benefited from a new scenic background and improved lighting, and the Building Sets have expanded with the addition of a Lotts Bricks church, Airfix Lock-Bricks and a rare No 1. Kiddicraft set designed by Hillary Page. A start has been made to improve the shop entrance area of the museum by the erection of a "Grecian" arch above the stairs into the main museum. This arch echoes the style of the scenery over the shop area's "Glamour of Brighton" display and is, in itself, a bygone relic commissioned by Christies in London for a prestigious Count Coluzzi toy train auction in the 1980s and thereafter was to be consigned to the rubbish skip until rescued by Museum Founder, Chris Littledale. It is hoped to continue this theme with another scenic arch over the toilet doors.

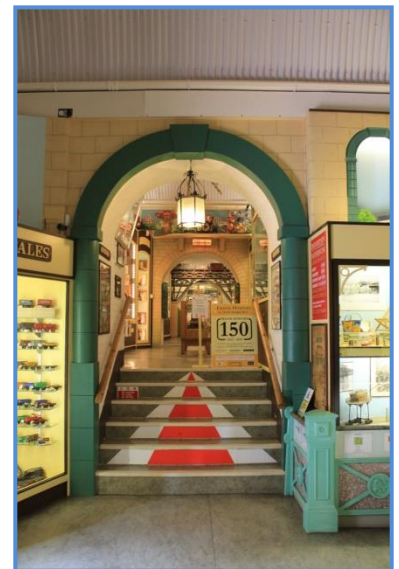


The LED lighting programme is nearing finalisation as the Basset-Lowke cabinet lighting has now been completed, with very dramatic results in some cases, for example the aforementioned Basset-Lowke cabinet and the soft toy cabinet, which were both woefully underlit. Admittedly, the improvement didn't stop there but continued to include the area of the Basset-Lowke cabinet with larger LED spotlights. Three arches are still to be improved. Firstly, the Meccano cabinet which was the experimental beginning of the project still requires additional lights and hoods. This will be tied in with the imminent re-vamp of the whole cabinet after which any extras can be assessed. Secondly, the '0' gauge layout needs re-lighting on the south side, and thirdly, the area on the north side of the '0' gauge needs a spotlight bar plus extra (or larger) LED spotlights and the hideous timber frame removed. That then is the lighting project – well, nearly so as, on reflection (?) another fifty 30mm LED strip-lights could easily be incorporated, improvement can still be improved upon, as perfection is an impossibility.

The Lighting Project

The LED lighting programme is nearing finalisation as the Basset-Lowke cabinet lighting has now been completed, with very dramatic results in some cases, for example the aforementioned Basset-Lowke cabinet and the soft toy cabinet, which were both woefully underlit. Admittedly, the improvement didn't stop there but continued to include the area of the Basset-Lowke cabinet with larger LED spotlights. Three arches are still to be improved. Firstly, the Meccano cabinet which was the experimental beginning of the project still requires additional lights and hoods. This will be tied in with the imminent re-vamp of the whole cabinet after which any extras can be assessed. Secondly, the '0' gauge layout needs re-lighting on the south side, and thirdly, the area on the north side of the '0' gauge needs a spotlight bar plus extra (or larger) LED spotlights and the hideous timber frame removed.

That then is the lighting project – well, nearly so as, on reflection (?) another fifty 30mm LED strip-lights could easily be incorporated, improvement can still be improved upon, as perfection is an impossibility.



Gordon Hall

MUSEUM ACQUISITIONS

BRIGHTON'S HISTORIC BUSESSES AND TRAMS FROM HORSE DRAWN TO TROLLEY BUS

9 hand built models in 7mm to one foot scale were kindly donated by K. A. Allbon The models are of great character and depict horse and steam powered trams from 1903 to the latest 1940 and Trolley buses in then familiar red and cream livery. The variety of these colourful models makes a remarkable display.



CARRIAGES AFTER FORTY FOUR YEARS

During 1979 I made an interesting purchase from a dear old friend, John Procter, trading in second hand toys and trains from Church Hill Patcham before he moved to Buckingham Road in Brighton. I acquired some rare and interesting '0' gauge LMS railway passenger coaches by Exley from around 1934. They were in extremely poor and damaged condition but I saw their potential and after 34 years of storage, I at last set about their restoration. The paint finish and livery is very attractive and elaborate in the chrome yellow lined deep lake. They are now resplendent on the '0' gauge Layout and have run several times.



THE 1930S DOLLS PRAM

Was kindly donated by Hazel Barnett It is in remarkable condition and demonstrates the total change in the way that we wheel our infants around today. This little pram is now used in our education programme and is complete with a vintage infant and educational material, so good to show the school groups.



TWO MAGNIFICENT STEAM LOCOMOTIVES

The museum has been very fortunate in securing a Gauge one Basset Lowke locomotive "Sir Gilbert Claughton" from around 1923, manufactured by Bing and handsomely painted in the classic red and grey lined London North Western black. This is now owned by the Littledale Brough "Collections" (LBC) Trust. The other magnificent addition was a 2 ½ inch gauge Carrette for Bassett-Lowke Great Northern railway 422 single drive axle locomotive circa 1904, extensively and sympathetically restored and donated to the Museum's LBC Trust by Michael Edwards, the original founder of the Sussex Vintage Model railway club. For this, very many thanks.



HOW YOU CAN HELP?

The Museum is a registered charity and is entirely dependent for its existence on the generosity and good will of its sponsors, volunteers, several collectors organisations and the income from visitors. The Brighton Toy and Model Museum is in the final instance a custodian of artefacts which were part of growing-up and educational progress of generations past, an essential part of the foundation of not only our culture but all aspects of life.

Please give generously

DONATIONS

Cash or objects are always welcome. Bear in mind also that a Legacy will make a direct contribution to the history we are preserving for future generations.

Collector's Items

The gift of an object to the Collections Trust will be used to improve the Museum's collections; it will be catalogued and added to the inventory, and so adding to an already superb variety of toys and models.

MUSEUM SHOP

The shop stock has been upgraded recently with additional pocket money toys as well as antique Brighton postcards reproductions and some souvenir stationery. You can also now purchase one of our Shire books that would complement your knowledge about museum's exhibits. We now also sell our own postcards with selected Museum exhibits.

The shop is an important source of income, by selling gifts or unwanted toys. The shop also sells collectable items on a commission basis and is widely known for its ever changing and excellent selection. If you have any items to sell which are in keeping with the ethos of the Museum, please enquire at the desk. Volunteer Andrew Woodfield is our able and knowledgeable Museum shop manager. If you have any items or collections you wish to dispose of please leave your contact details at the desk.

*******STOP PRESS*******

We are official Hornby Hobbies agents and the new 00 gauge, 5 car Brighton Belle set is now available, please contact us for special prices. 01273 749 494.

CORPORATE AND SOCIAL FUNCTIONS

The Museum is a unique environment in which to enjoy corporate and social functions for up to 70 people. The location is easily accessible from a within a 30 mile radius, situated as we are, directly below the Brighton main line railway station, near the central bus terminal and parking for some 20 cars can be arranged.

13

Prices according to requirements, quotes available, please contact the museum.

HOW YOU CAN HELP

SPONSORSHIP (PLEASE GIFT AID*)

Management Fund: £5 to £10 per week = £250/500 pa.

Museum running costs: Sponsoring an exhibit (£70+) or showcase with name attributed (£500+)

Your support will provide you with:-

- ◇ Public recognition of your name as a sponsor to the cause, strategically placed in the specific to the appropriate project will be listed in the Museum and on the website
- ◇ 1 years free entrance for yourself and between one and three others depending on the level
- ◇ Free entrance for one plus family to our Museum special day events
- ◇ Periodic newsletters with Museum and event updates

BECOME A FRIEND OR PATRON (PLEASE GIFT AID*)

Junior/Student Friend	£25	£20*	For up to 16 year olds or students with valid ID
Adult Friend	£35	£28*	
Adult Friend +1	£50	£40*	For 2 living at the same address
Senior Friend	£25	£20*	For the over 60s
Senior Friend +1	£35	£28*	For 2 over 60s living at the same address
Family Friends	£60	£48*	For a family with 2 adults & 4 children (up to 12)

*Offer for Sussex residents on proof of residency ?

By becoming a friend we can provide you with:-

- ◇ 1 years free entrance
- ◇ 10% discount on new shop stock (not valid on commission sales)
- ◇ Half price admission to Museum special day events
- ◇ One guided tour by arrangement for yourself and up to 11 guest*

For those able and willing to give added support please become a:-

Patron - £70 (Please Gift Aid*)

- ◇ 1 years free entrance for yourself and one other
- ◇ 10% discount on new shop stock (not valid on commission sales)
- ◇ Free entrance to all Museum special day events
- ◇ Periodic newsletters with Museum and event updates
- ◇ Use of our archive/resource room by appointment only (conditions apply)
- ◇ Two guided tours by arrangement for yourself and up to 11 guests*

*Normal admission fee applies to guests

Life Patron - £300

- ◇ One off payment entitles free entrance for yourself and one other for life
- ◇ 10% discount on new shop stock (not valid on commission sales)
- ◇ Free entrance to all Museum special day events
- ◇ Your name to be included in the periodic newsletters and the email list
- ◇ Discounted rates for the private use of the Museum for private functions
- ◇ Periodic newsletters with Museum and event updates
- ◇ Use of our archive/resource room by appointment only (conditions apply)

(* Gift aid; if you are a UK taxpayer, we can claim an extra 25% back from HMRC.)

SPONSORSHIP FORM

I would like to help towards (please tick)...

Signature.....Date.....

Do you pay tax? For every £1 you gift aid, the Museum currently receives an additional 25p. Please

I am a UK tax payer, and I want the charity to treat all donations I have made since the 6th April 2002,

Notes for your retention

MEMBERSHIP APPLICATION FORM

I wish to enrol as (please tick)...

- | | | | |
|---|-----|--|------|
| <input type="checkbox"/> Junior / Student Friend | £20 | <input type="checkbox"/> Adult Friend + 1 | £45 |
| <input type="checkbox"/> Adult Friend | £30 | <input type="checkbox"/> Senior Friend + 1 | £30 |
| <input type="checkbox"/> Senior Friend | £20 | <input type="checkbox"/> Life Patron | £300 |
| <input type="checkbox"/> Family (2 adults & 2 children) | £60 | | |
| <input type="checkbox"/> Patron | £70 | | |

Please make cheques payable to **The Brighton Toy and Model Museum** and send along with this form to the address on the front page

My Details

Title..... Forename(s) or initials..... Surname.....

Company (if applicable).....

.....

.....

..... Post Code.....

Email..... Phone No.....

- I would like to be 'green' and receive applicable correspondence by email

Gift Aid Declaration

Do you pay tax? For every £1 you gift aid, the Museum currently receives an additional 25p. Please enable us to take advantage of the Gift Aid Scheme that allows us to reclaim the tax on every gift, so long as you have paid income tax or capital gains tax equal to the tax we will reclaim. Plus if you pay at the higher rate, you can claim back for yourself the difference between the standard rate and the higher rate of tax. For every £1 you give, you can reclaim 12.5p for yourself.

- I am a UK tax payer, and I want the charity to treat all donations I have made since the 6th April 2002, and all donations I make from the date of this declaration until I notify you otherwise, as Gift Aid donations.

Signature.....Date.....

Notes for your retention

1. If your declaration covers donations you may make in the future: please notify the charity if you change your name or address while the declaration is still in force. You can cancel the declaration at any time; by notifying the charity it will then not apply to donations you make on or after the date of cancellation, or such later date as you specify
2. You must pay an amount of income tax and/or capital gains tax at least equal to the tax that the charity reclaims on your donations in the tax year
3. If in the future your circumstances change, and you no longer pay tax on your income and capital gains, equal to the tax that the charity reclaims, you can cancel your declaration
4. ¹⁶ If you pay tax at the higher rate, you can claim further tax relief in your Self Assessment tax return. If you are unsure whether your donations qualify for Gift Aid tax relief, ask the charity. Or you can ask your local tax office for an explanatory leaflet
5. To conform to Inland Revenue requirements for Gift Aid the benefit of free entrance is restricted to Friends and Patrons.

OUR SPONSORS

SAS?!



www.networkrail.co.uk



www.southernrailway.com



www.railwayheritagetrust.co.uk



www.hornby.com



www.brightonbelle.com



www.hrca.net



www.VisitBrighton.com



www.buses.co.uk



www.brighton-hove.gov.uk



www.stmv.co.uk



Digital Design | Art Direction | Photography

www.mathewkeller.com



www.pommery.com



www.wallisandwallis.com



Domestic Appliances

www.beko.co.uk



www.tooveys.com



www.tsprofessional.co.uk



www.lightingservices.com



INTRUDER ALARMS - CCTV - ACCESS CONTROL

www.security201.co.uk



www.wessexnetworks.com



www.gelighting.com



www.mea.philips.com